

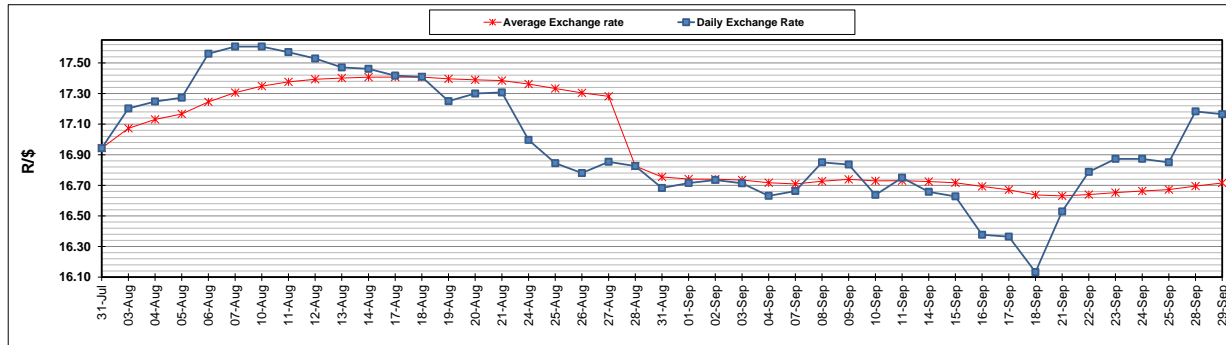
	PETROL 95 ULP	PETROL 93 ULP & LRP	DIESEL 0.05%	DIESEL 0.005%	ILL. PAR.
GAUTENG PUMP PRICE (SA c/l) AS FROM 02/09/2020	1,518.000	1,489.000	-	-	-
WHOLESALE PRICE (SA c/l) AS FROM 02/09/2020	-	-	1,327.560	1,331.960	716.828
SINGLE NATIONAL MAXIMUM RETAIL PRICE	-	-	-	-	899.000
BASIC FUEL PRICE - 29/09/2020 (SA c/l)	557.790	544.279	499.089	500.854	461.509
PRESS RELEASE CONTRIBUTION TO BFP 02/09/2020 - 29/09/2020 (SA c/l)	565.470	546.470	576.630	581.030	512.128
UNIT OVER/(UNDER) RECOVERY - 29/09/2020 (SA c/l)	7.680	2.191	77.541	80.176	50.619
AVERAGE BASIC FUEL PRICE 28/08/2020 - 29/09/2020	534.331	523.733	489.619	491.654	438.764
AVERAGE UNIT OVER/(UNDER) RECOVERY 28/08/2020 - 29/09/2020	31.700	23.298	89.750	92.115	76.755

### ANALYSIS MOVEMENT OF AVERAGE OVER/(UNDER) RECOVERY

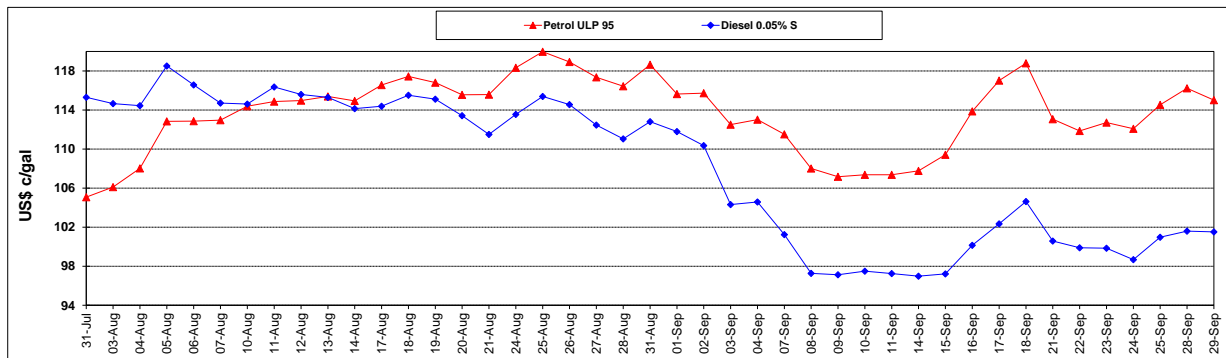
	PETROL 95	PETROL 93	DIESEL 0.05%	DIESEL 0.005%	ILL. PAR.
- MOVEMENT IN INTERNATIONAL PRODUCT PRICES	13.614	5.570	73.177	75.473	61.903
- MOVEMENT IN EXCHANGE RATE	18.086	17.728	16.573	16.642	14.852
AVERAGE UNIT OVER/(UNDER) RECOVERY 28/08/2020 - 29/09/2020	31.700	23.298	89.750	92.115	76.755

### R/\$ EXCHANGE RATE - (R/\$17.1648 - 29/09/2020)

#### EXCHANGE RATE USED IN BASIC FUEL PRICE



#### INTERNATIONAL PRODUCT PRICES OF BASKET USED IN BASIC FUEL PRICE



#### BASIC FUEL PRICE IN SA CENTS PER LITRE

